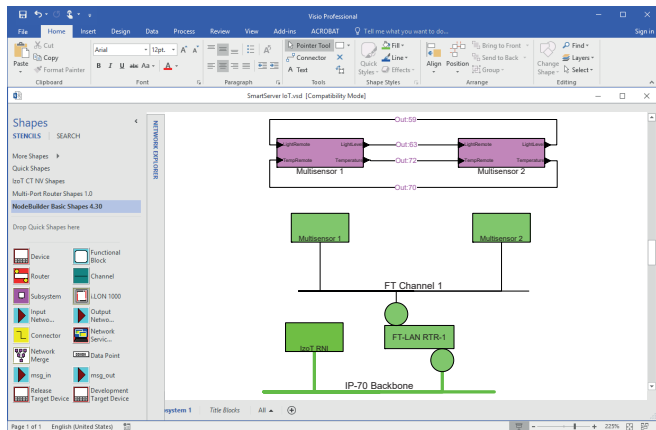


# IzoT™ Commissioning Tool (CT)



## Product Description

IzoT CT is a software tool for installing and commissioning LON® networks. Install and commission a community of devices by simply drawing your network with the integrated Microsoft Visio tool. As you draw your network, the IzoT Commissioning Tool (CT) communicates with your devices to make them match your drawing. To make two devices communicate, you draw a line between them. The result is a network drawing that serves as the as-built documentation for your network.

Compatible plug-in applications for configuring a wide variety of LON devices are available from hundreds of device manufacturers. IzoT CT integrates seamlessly with these plug-ins so you can automatically start the correct plug-in by clicking on a device and selecting Configure from the menu.

IzoT CT works with all LON devices giving you a wide variety of options for the devices to be installed in your networks. There are never any per-device fees, credits, or royalties when using IzoT CT.

IzoT CT includes the LNS®-compatible IzoT Net Server. The server provides an open platform for tools and applications to interact with your LON networks. You can also use the integrated XML file import/export capability to integrate with applications that are not compatible with the server.

## Features

- Commissions LON devices with a simple graphical interface
- Compatible with all LON media including LON/IP-70, LON/IP-852, LON/FT, LON/PL-20, and LON/TP-1250
- Provides an open platform supporting multiple simultaneous users commissioning devices and running multiple applications from multiple vendors
- Supports IzoT Net Server and LNS plug-ins
- Supported by hundreds of third-party applications
- Includes integrated LNS-compatible IzoT Net Server for network management
- Integrates easily with third-party tools and applications with an XML file import/export capability
- Reduces network design time with support for custom shapes and automatic connection-type selection
- Supports multiple LON networks, each with up to 32,385 devices on up to 1000 channels
- Supports LON devices with up to 4096 network variables per device
- Merges independent networks into a single network
- Imports and exports AutoCAD drawings
- Supports data point monitoring and control from your network drawings
- Includes the IzoT CT Browser for monitoring and controlling the devices in your network
- Free trial edition is available for download (not including Visio)

## PRODUCT DESCRIPTION

You can reduce your network design time by creating custom shapes that represent the common device or subsystem configurations that you frequently install. For example, you can create a custom shape that represents all the devices in a room, including their device types, configuration, and connections. To add a new room to your network, you drag your room custom shape to your drawing and all the devices are automatically created in your drawing and in the server database, along with the configuration and connections that you specified.

You can further reduce network design time with automatic connection-type selection. When you create a connection in your drawing, IzoT CT automatically selects the communications services for the connection based on the sources and targets that you specify. You can manually override the selections to fine tune your network behavior.

For very large networks where connectivity is not available between all devices during initial construction, you can initially create your IzoT CT drawings and physical networks as independent networks. When connectivity is available between your networks, you can use IzoT CT to automatically merge the independent networks into one large network.

You can import AutoCAD drawings of your installations into your IzoT CT drawings. For example, if you are installing a network in a building, you can import the AutoCAD floor plan of the building to serve as the background for your IzoT CT drawing. You can also export your IzoT CT drawing as an AutoCAD drawing.

You can design your networks and commission your devices at the same time, or you can do your network design independent of the physical hardware and later commission your devices. You can commission your devices one at a time, in groups, or by subsystem.

Once you have commissioned your devices, you can monitor and control their operation from your drawings using connection monitoring and Data Point shapes, or from the IzoT CT Browser which provides a tabular view of your selected data points. You can use the integrated device management window to test your devices and determine their status.

### New Features

The following enhancements have been added since IzoT CT 4.0:

- *Visio 2016* – the editions of IzoT CT that include Visio now include Visio 2016, replacing Visio 2010 in Release 4.0
- *Windows 10 and Server 2016 Compatibility* – Support for 64-bit Windows 10 and Windows Server 2016
- *LON/IP Support* – Support for IP-70 interfaces and devices for native IP communication
- *Series 6000, 5000, and 3100 Smart Transceiver and Neuron Chip Support* – Support for application image download to any Series 6000, 5000, or 3100 Smart Transceiver or Neuron Chip
- *Version 16 LonMark® Standard Resources* – This new resource file set includes 50 new standard profiles, including the new VDI 3813 room automation functions
- *U60 and U70 Network Interfaces* – Support for U60 FT, U60 TP-1250, and U70 PL-20 USB network interfaces

# SPECIFICATIONS

## PC requirements

Operating system:	Microsoft Windows 10 (64-bit and 32-bit), Windows 8.1 (64-bit and 32-bit), Windows Server 2016 (64-bit), or Windows Server 2012 (64-bit)
Minimum hardware:	1 gigahertz (GHz) or faster x86-bit or x64-bit processor with SSE2 instruction set 2 GB RAM 1280 x 800 screen resolution display

## LON network limits

Limits per device:	4096 NVs per device
--------------------	---------------------

## Limits per network:

5 active IzoT CT clients
32,385 devices (routers and network service devices count as two devices each)
32,385 application device types
1000 channels and 1000 routers
1 domain
12,288 bound selectors (selectors are automatically reused)

## Limits per IzoT CT:

32,768 address table entries
1024 alias table entries
250 simultaneous outgoing transactions (when using a Layer 2 or IP interface)
250 simultaneous incoming transactions (when using a Layer 2 or IP interface)

## SOFTWARE EDITIONS AND UPDATE INFORMATION

IzoT CT is available in multiple editions. The full-featured Professional Edition supports an unlimited number of networks and is suitable for network integrators. The Standard Edition supports up to five networks and is suitable for embedded tools, where IzoT CT is installed as a dedicated tool for an individual network.

Versions of IzoT CT are available with and without an integrated copy of Visio 2016. IzoT CT requires Visio 2019, 2016 or 2010. The version without Visio is ideal for users who already have a license for Visio.

One year of maintenance is included with purchase, allowing all updates to be downloaded and installed for free. For ongoing support, you must purchase maintenance prior to expiration of the annual period (either initial free period or subsequent renewal). Should your maintenance agreement lapse, it cannot be renewed.

Model #	Product Name	Product Description
38000-401	IzoT CT Professional Edition with Visio	DVD and activation for single user
38050-401	IzoT CT Professional Edition Activation Key	Activation key for additional user of Pro Edition with Visio
38060-400	IzoT CT Professional Edition	License for software download; does not include Visio
38100-401	IzoT CT Standard Edition with Visio	DVD and activation for single user
38150-401	IzoT CT Standard Edition Activation Key	Activation key for additional user of Standard Edition with Visio
38160-400	IzoT CT Standard Edition	License for software download; does not include Visio
93800	IzoT CT Professional Maintenance	One-Year Maintenance Renewal
93810	IzoT CT Standard Maintenance	One-Year Maintenance Renewal