

E- Ink Segmented Display Drivers

Dialog Semiconductor's DA85xx family of devices is a range of fully optimized segment driver ICs designed to meet the requirements of segmented electronic paper displays (EPDs).

The family includes a range of devices offering 24, 64, and 192 segments, each in a single integrated package solution to a wide range of applications. The 64 and 192 segment devices can be operated in cascade mode to further expand system capabilities.

The DA85xx devices integrate all of the important functions required for successful functioning of an electronic paper segmented display, and only require two external components to create a full system solution.

Data is clocked into the device using a SPI serial interface before the integrated charge pumps generate the high voltages required to drive the display. Once the display has been updated, the driver can be switched into standby or power down mode while still retaining the image on the display.

Using advanced packaging techniques, the DA85xx series integrates a high level of functionality into a single package, enabling a high density, low footprint design with minimal external components. The 64 and 192 segment devices are also available in bare-die formats for smart cards, memory cards and other applications with restricted physical space.



Features

- Fully integrated segmented electronic paper display driver IC
- 24, 64, and 192 segment drivers
- Low system component count requiring only two external capacitors
- Power down mode
- Extended battery life
- 64, and 192 segment devices with cascade capability to expand drive capabilities
- Ultra-thin LGA packages
- Bumped die package for chip-on-board or chip-on-flex
- Evaluation kits available for fast system development
- Connects directly to the battery, includes multimode battery charger(Single cell Lithium)

Functions

- Fully regulated high voltage outputs
- Any segment drive can be used as display common
- Easy to use SPI interface
- Single 1.8V-3.3V supply
- Ultra low power standby mode

Applications

- Smart cards
- Mobile phone
- Capacity meters (e.g. memory cards)
- Electronic shelf labels
- Watches and clocks
- Public Displays
- Medical devices

Product Line-up

Part No.	Segments	Package
DA8527	24	36-pin 4x4mm LGA
DA8521	64	80-pin 5x5mm LGA
DA8523	192	208-pin 7x12mm LGA
DA8531	64	80-pin 5x5mm BGA

Product brief

Overview

A range of evaluation kits have been developed to support the design of these segment display drivers. The evaluation kit offers a full hardware and software development environment to allow for fast system design and device evaluation

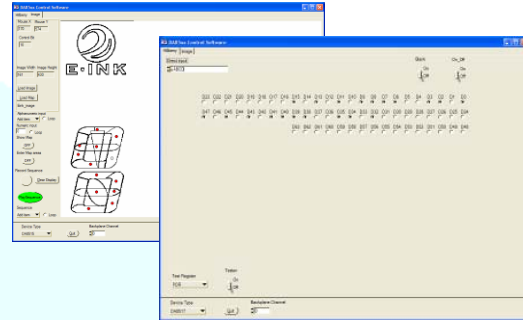


Hardware Development

The evaluation kit can be controlled via a USB interface connected to a PC or directly to a microcontroller as part of a larger development environment. A range of interfaces are also available to allow connection to different displays using both packaged and bare-die format solutions

Software Development

Also provided is a comprehensive Windows based evaluation and development software environment.



This allows a designer to import a bitmap display image to enable rapid development using a full graphical user interface. Segment drive capabilities can be defined for the display under development along with the sequencing required to fully develop and evaluate the final system. Control of various timing parameters can be accessed to optimize the design for specific applications in different working environments.



Version 1.0 September 4th 2008

Dialog Semiconductor worldwide offices

Germany (Headquarters)

Tel: (+49) 7021 805-0

Fax: (+49) 7021 805-100

Japan

Tel: (+81) 3 3215 5123

Fax: (+81) 3 3215 5124

Korea

Tel: (+82) 2 6007 2303

Fax: (+82) 2 6007 2001

Taiwan

Tel: (+886) 37 598 166

Fax: (+886) 37 595 026

USA

Tel: (+1) 888 809 3816

Fax: (+1) 408 328 9275

United Kingdom

Tel: (+44) 1793 757700

Fax: (+44) 1793 757800

Email: enquiry@diasemi.com

Web: www.dialog-semiconductor.com

This publication is issued to provide outline information only, which (unless agreed by Dialog Semiconductor in writing) may not be used, applied or reproduced for any purpose or form part of any order or contract or be regarded as a representation relating to products or services concerned. Dialog Semiconductor reserves the right to alter without notice the specification, design, price or conditions of supply of the product. Customer takes note that Dialog Semiconductor's products are not designed for use in devices or systems intended for supporting or monitoring life nor for surgical implants into the body. Customer shall notify the company of any such intended use so that Dialog Semiconductor may determine suitability. Customer agrees to indemnify Dialog Semiconductor for all damages that may be incurred due to use without the company's prior written permission of products in such applications.
© Dialog Semiconductor 2008. All rights reserved.

